

*Okaloosa-Walton  
Domestic Violence  
Coordinating Council*

**2005-2006  
Safety and Accountability  
System Map**



**Introduction**

This map has been made possible due to the efforts of our local community agencies in collaboration with Okaloosa-Walton Domestic Violence Coordinating Council.

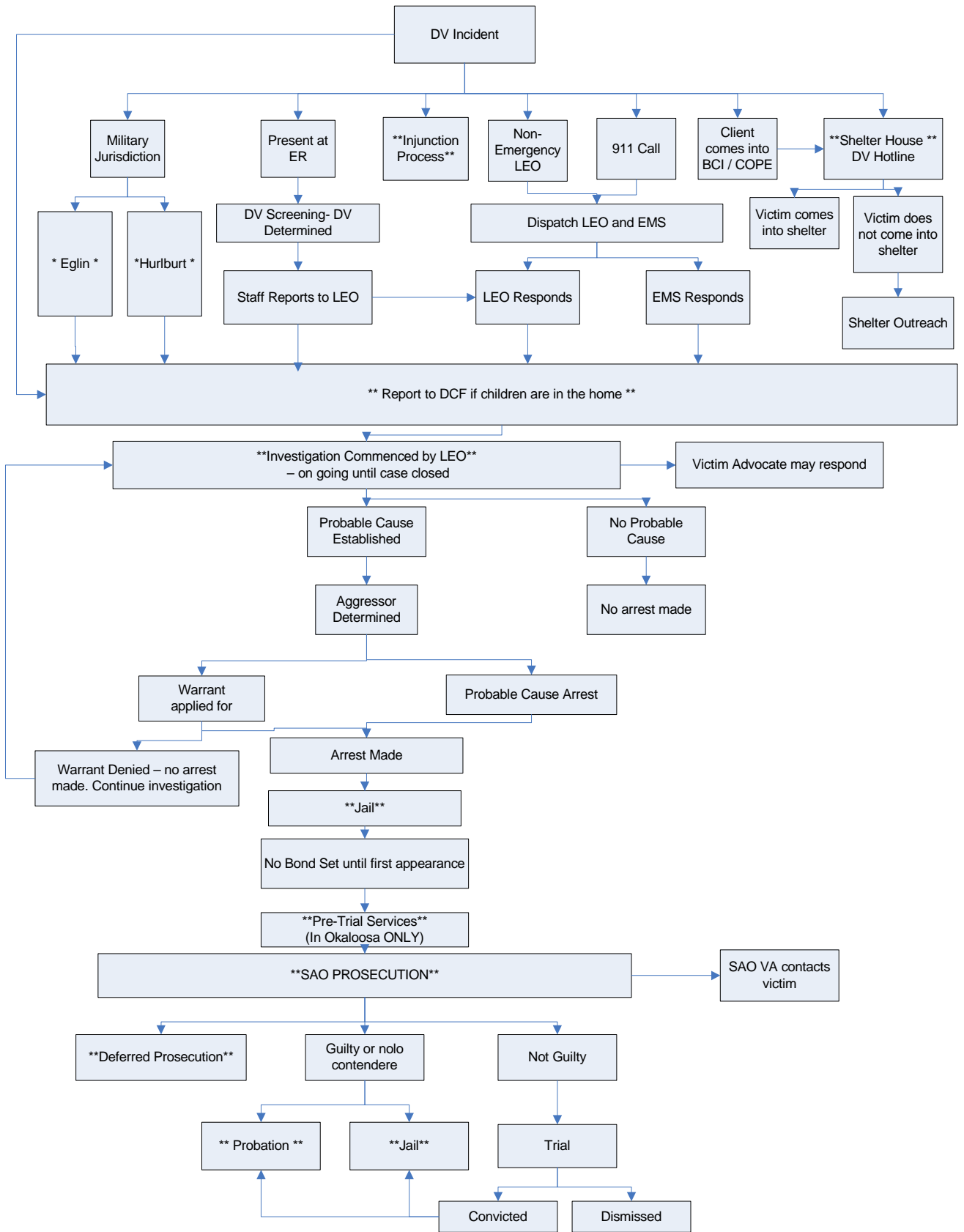
From November 2004 to July 2006, several people organized on a monthly basis with the goal of mapping out our system in order to better understand how each of us plays a part in responding to domestic violence. As a result of these meetings, several relationships were formed and innovative changes were able to take place in the world around us.

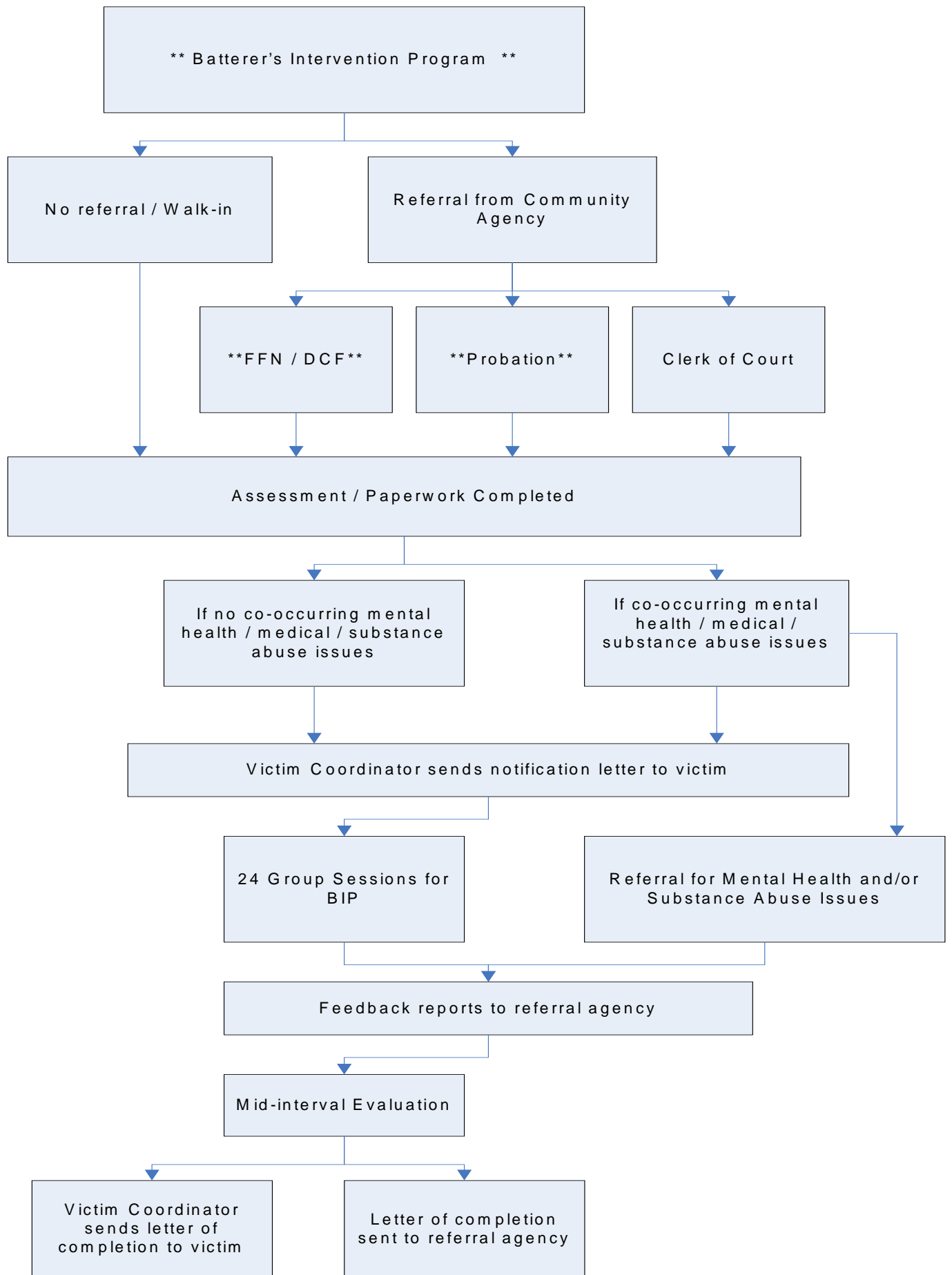
This map is a work in progress. It will never be finished and will be constantly updated and/or expanded. Please consider that as we grow within our community, our system will continue to grow and take many shapes and forms accordingly.

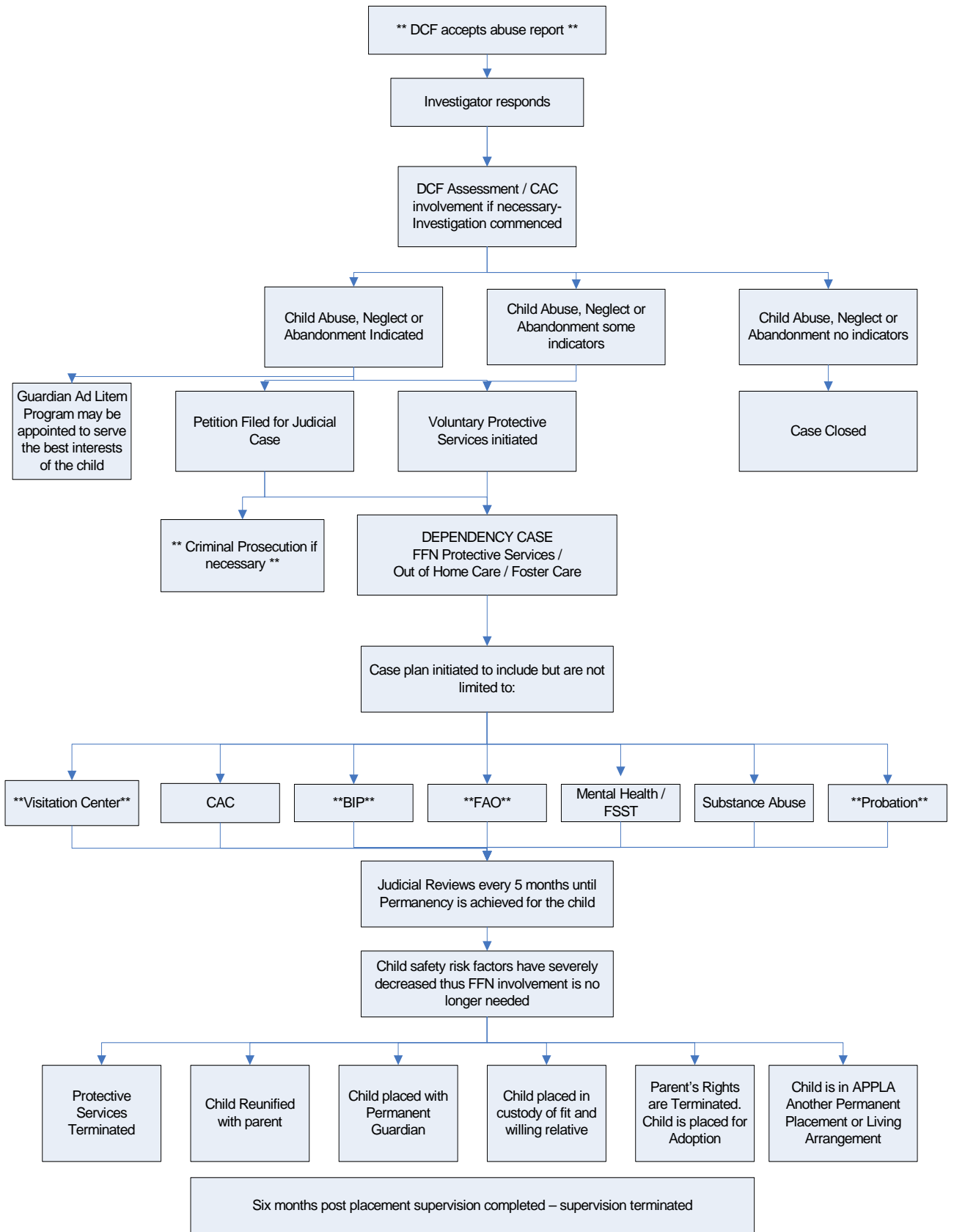
We humbly thank all that helped participate in making our system map a reality.

**Table of Contents**

<b>Pg. 1</b>	<b>Overall System</b>
<b>Pg. 2</b>	<b>Injunction Process</b>
<b>Pg. 3</b>	<b>Eglin Victim Advocate Position</b>
<b>Pg. 4</b>	<b>Eglin Family Advocacy Program</b>
<b>Pg. 5</b>	<b>Hurlburt Field</b>
<b>Pg. 6</b>	<b>Shelter House</b>
<b>Pg. 7</b>	<b>Law Enforcement</b>
<b>Pg. 8</b>	<b>Okaloosa County Jail</b>
<b>Pg. 9</b>	<b>State Attorney's Office</b>
<b>Pg. 10</b>	<b>Deferred Prosecution Agreement Process</b>
<b>Pg. 11</b>	<b>Okaloosa County Pre-Trial Services</b>
<b>Pg. 12</b>	<b>Child Welfare (Dependency) System</b>
<b>Pg. 13</b>	<b>Bridgeway Misdemeanor Probation</b>
<b>Pg. 14</b>	<b>Batterer's Intervention Program</b>
<b>Pg. 15</b>	<b>Visitation Center</b>







**\*\* D e f e r r e d P r o s e c u t i o n  
A g r e e m e n t \*\***

D P A f i l e d w i t h  
S t a t e A t t o r n e y ' s  
O f f i c e

D P A s e n t t o  
B r i d g e w a y  
M i s d e m e a n o r  
P r o b a t i o n

O f f e n d e r i s s c h e d u l e d f o r  
o r i e n t a t i o n

I n f o r m a t i o n i s e n t e r e d i n t o  
C M H C s y s t e m , c a s e i s  
a s s i g n e d , f i l e i s c r e a t e d

O f f e n d e r m e e t s w i t h P r o b a t i o n O f f i c e r C o u r t o r d e r e d r e q u i r e m e n t s  
a n d c o n d i t i o n s o f s u p e r v i s i o n a r e d i s c u s s e d .  
S u p e r v i s i o n p a p e r w o r k s i g n e d .

O f f e n d e r m a y b e  
o r d e r e d M e d i u m  
l e v e l s u p e r v i s i o n  
( r e p o r t m o n t h l y )

O f f e n d e r m a y b e  
o r d e r e d A d m i n i s t r a t i v e  
o r M i n i m u m l e v e l  
s u p e r v i s i o n  
( n o r e p o r t i n g )

C o l l a t e r a l c o n t a c t s a r e m a d e  
( D C F / F F N , \*\* B I P P r o g r a m \*\* , S e r v i c e P r o v i d e r s )

O f f e n d e r s u c c e s s f u l l y  
c o m p l e t e s D P A .  
T e r m i n a t i o n  
p a p e r w o r k f i l e d w i t h  
c o u r t

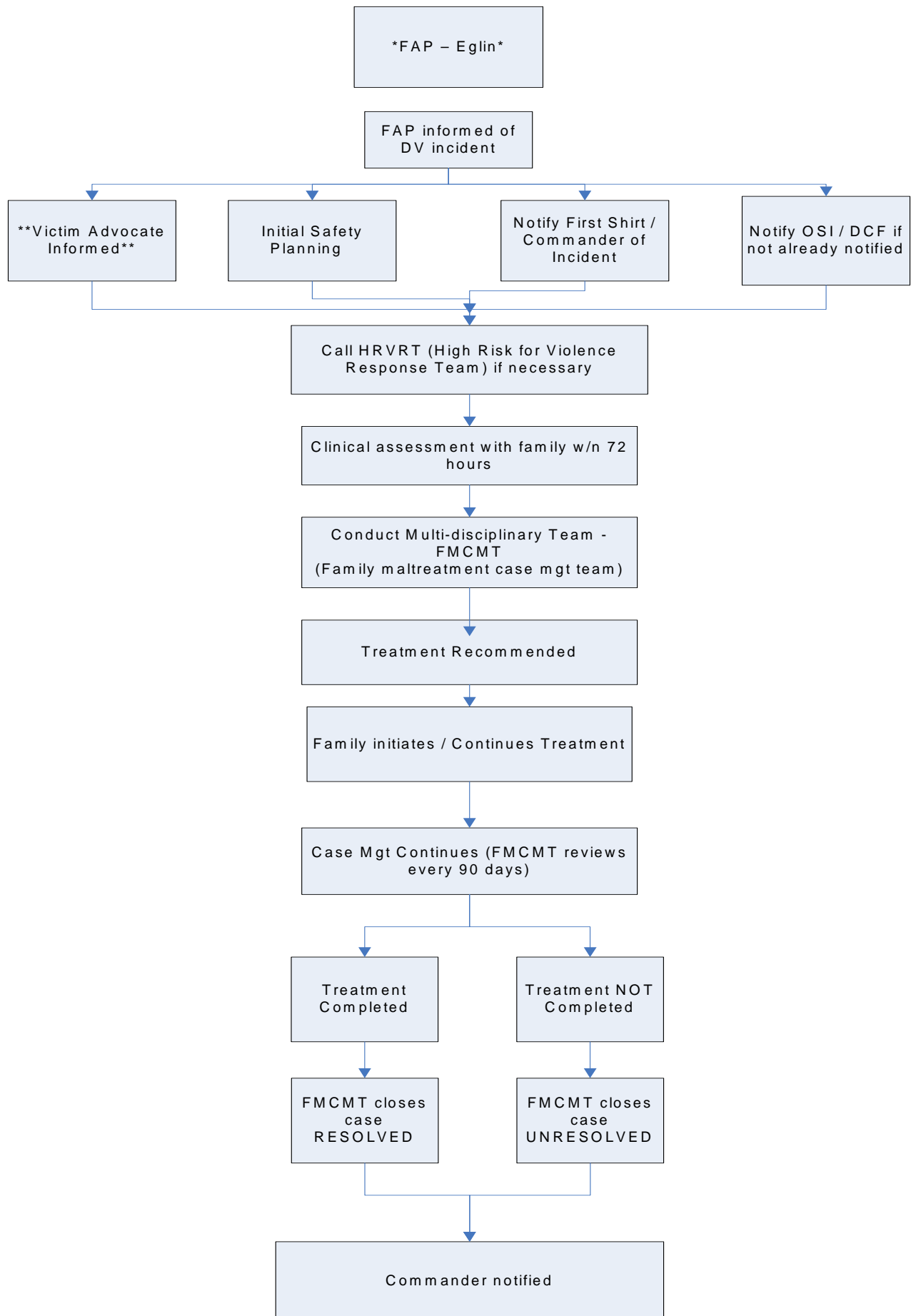
O f f e n d e r v i o l a t e s h i s /  
h e r s u p e r v i s i o n / D P A  
A f f i d a v i t o f n o n -  
c o m p l i a n c e i s f i l e d

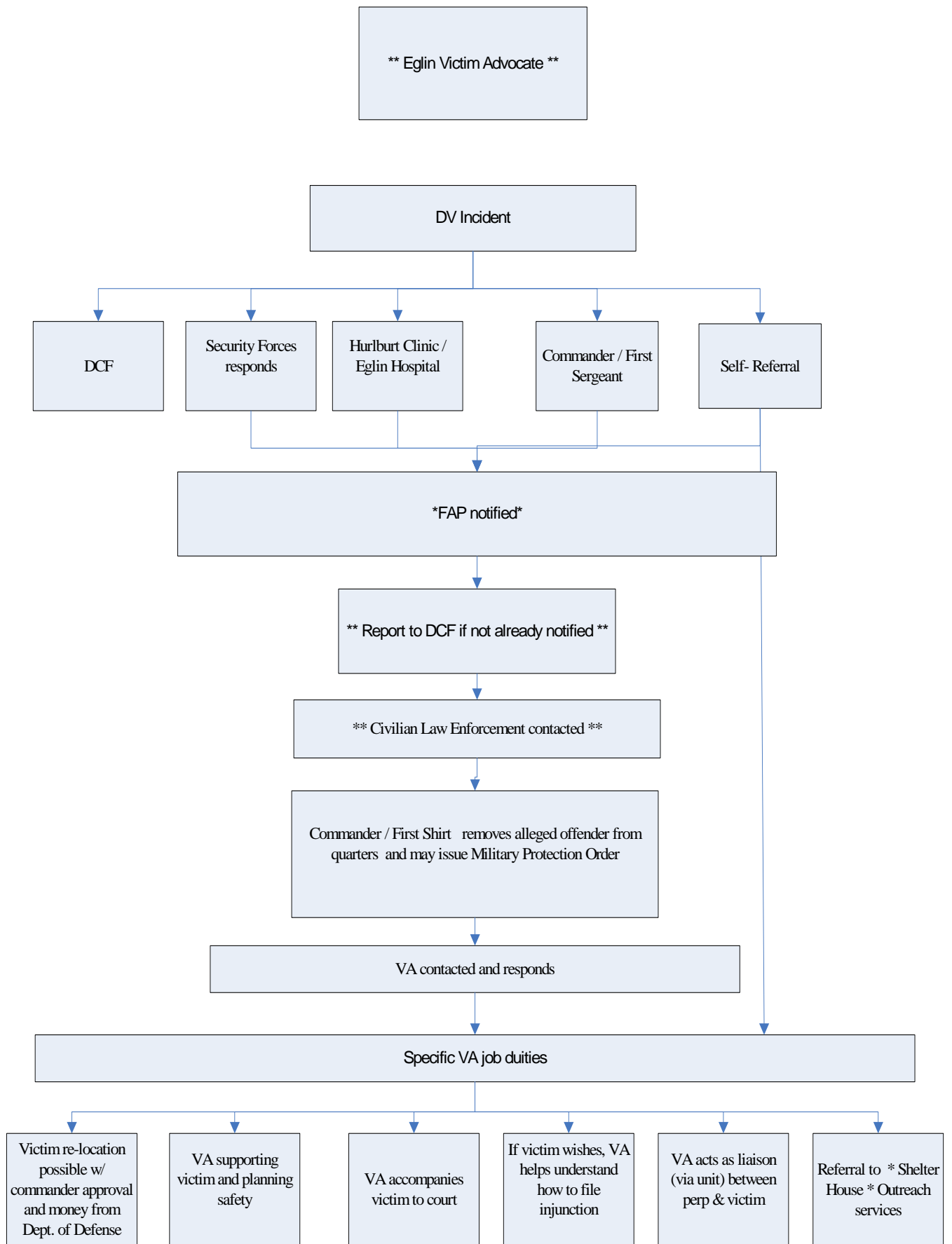
S t a t e A t t o r n e y  
d i s m i s s e s c a s e

O f f e n d e r i s o r d e r e d t o  
a p p e a r b e f o r e t h e J u d g e

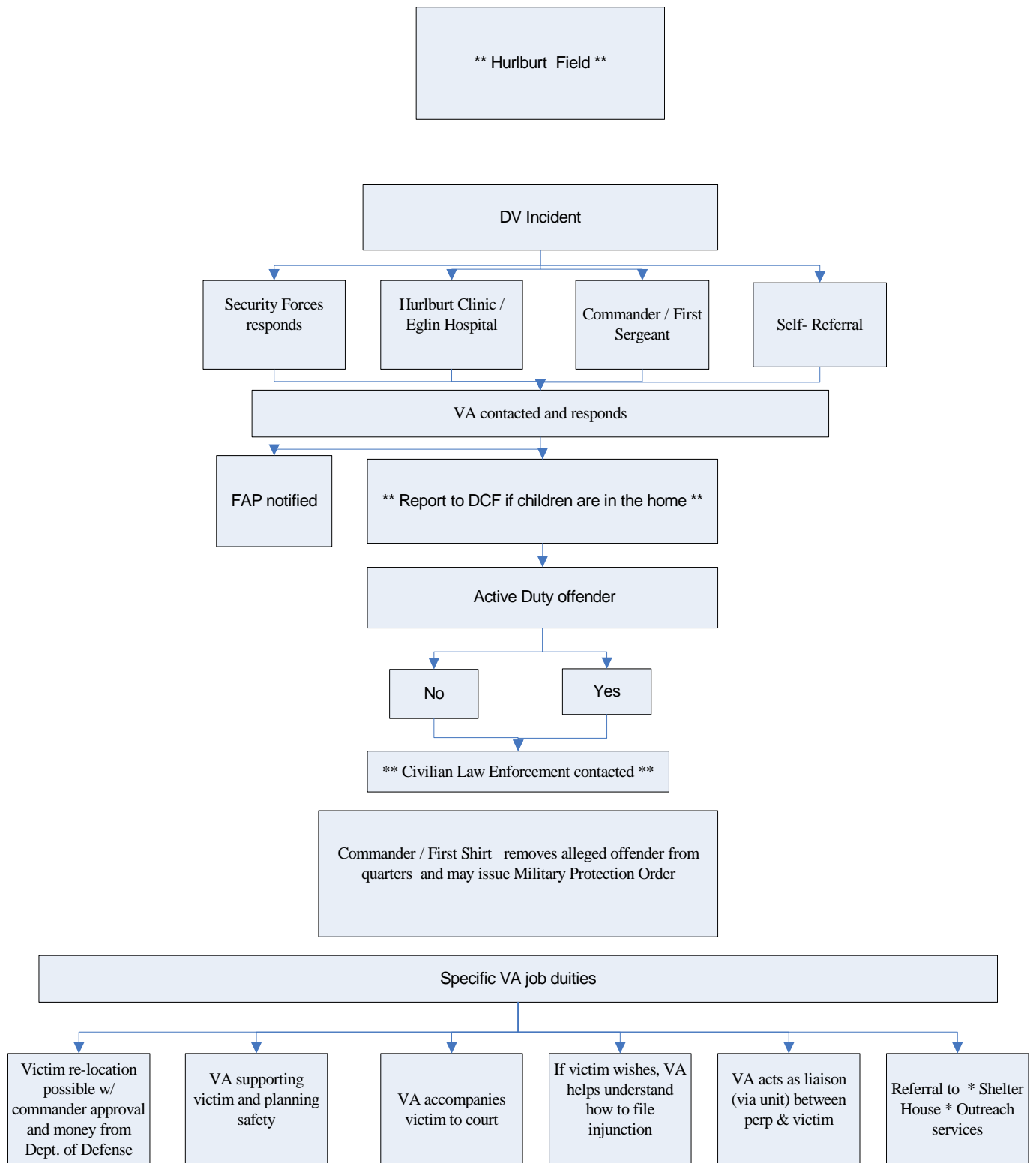
P O m a k e s  
r e c o m m e n d a t i o n s t o t h e  
S A O , J u d g e a n d P u b l i c  
D e f e n d e r

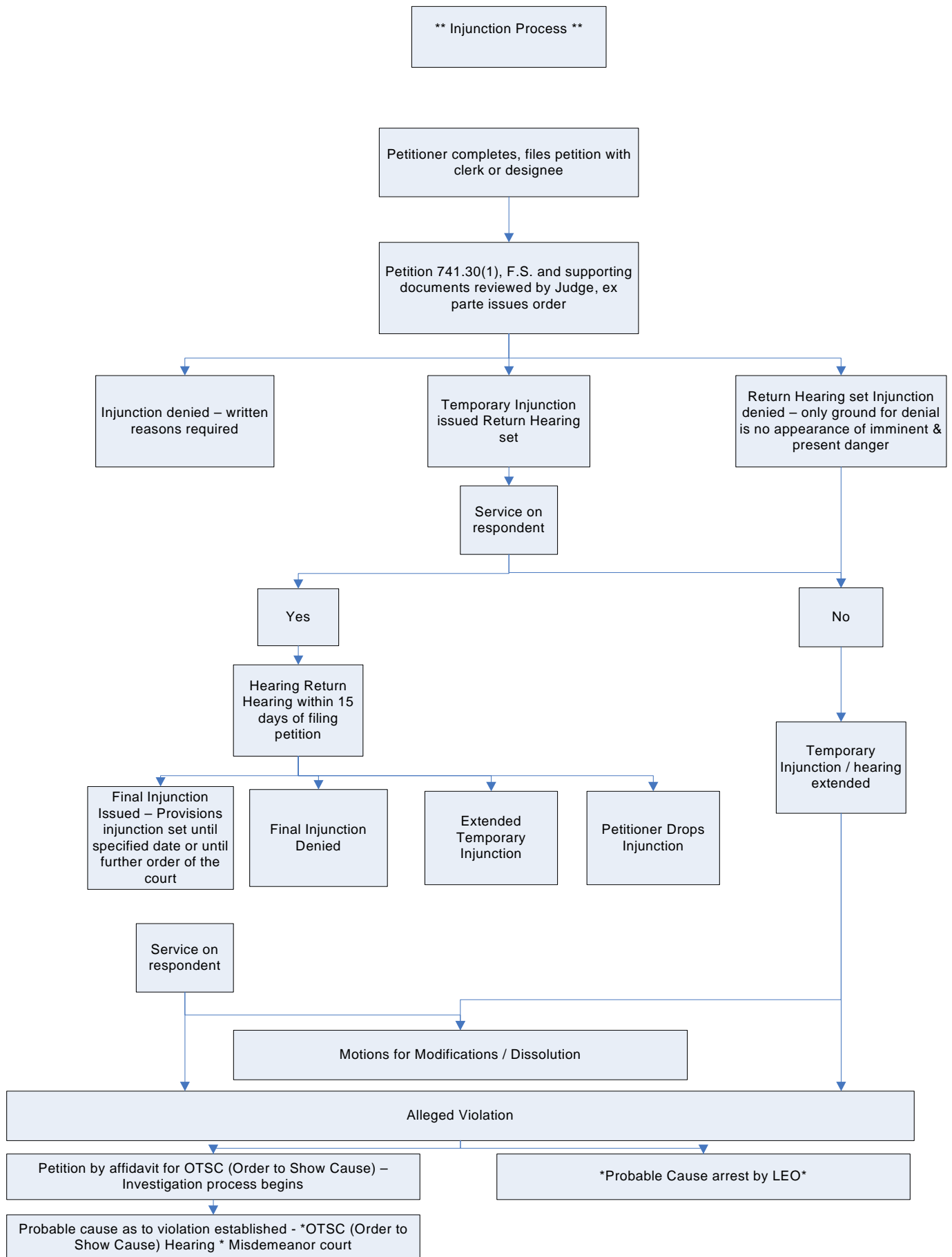
**\*\* P r o s e c u t i o n c o m m e n c e s \*\***

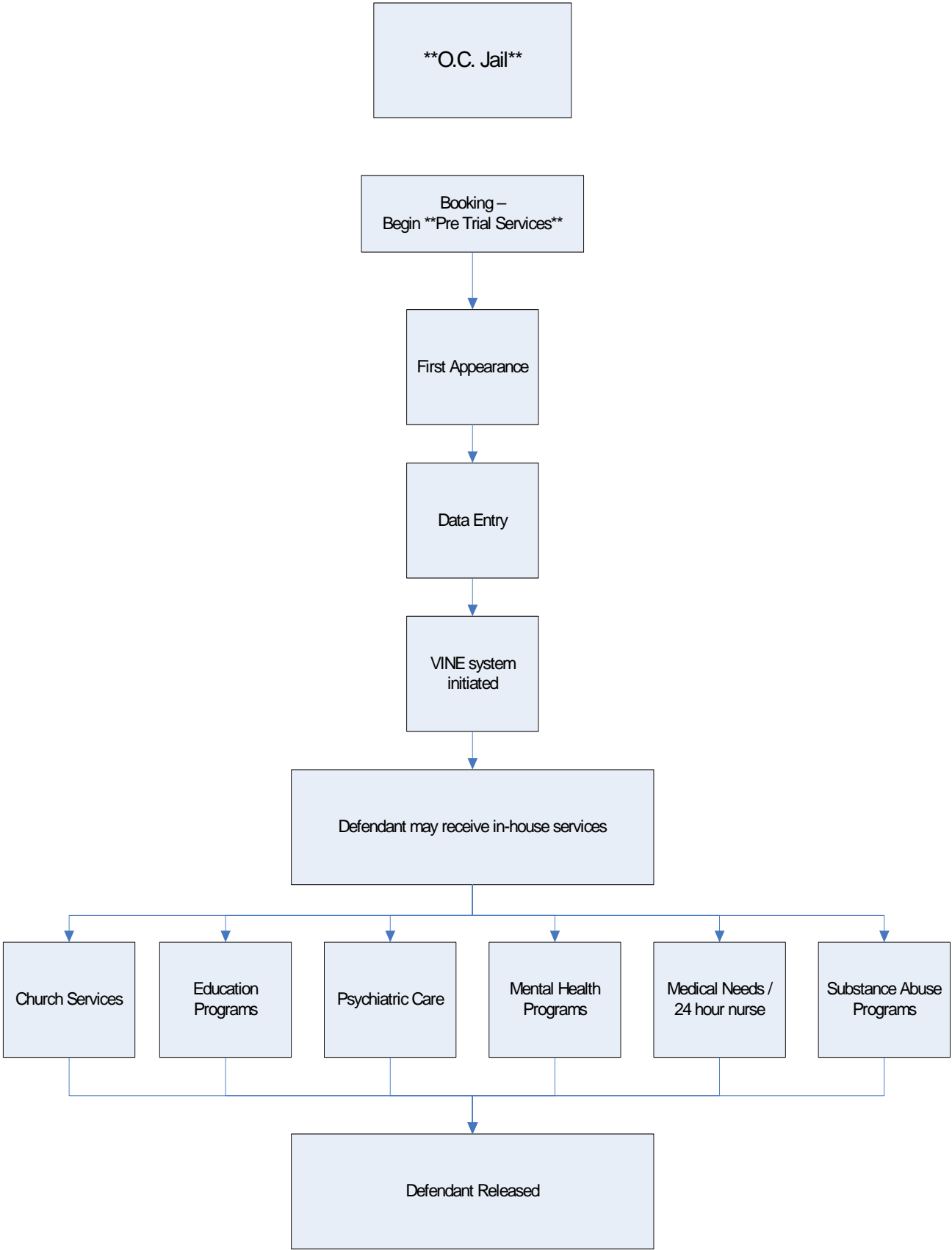


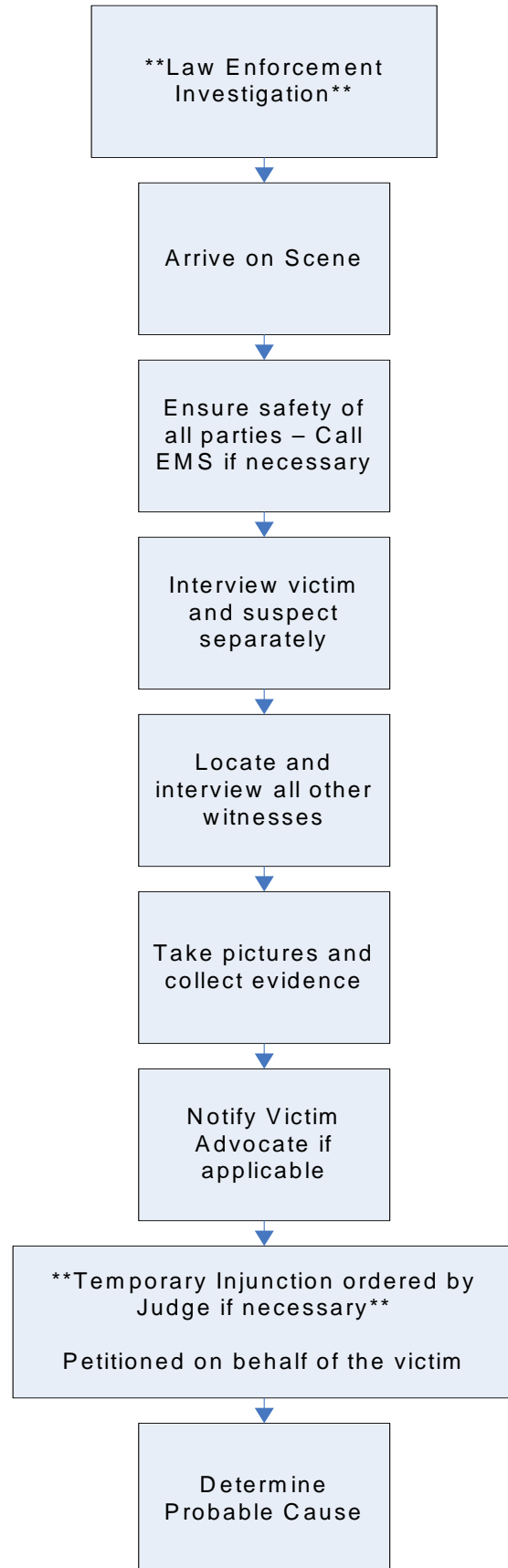
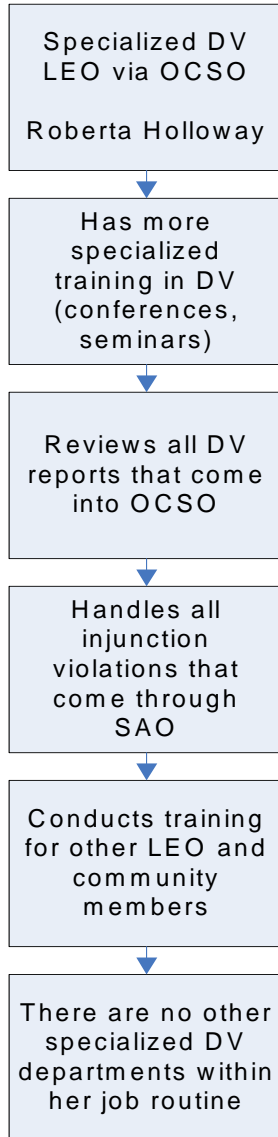


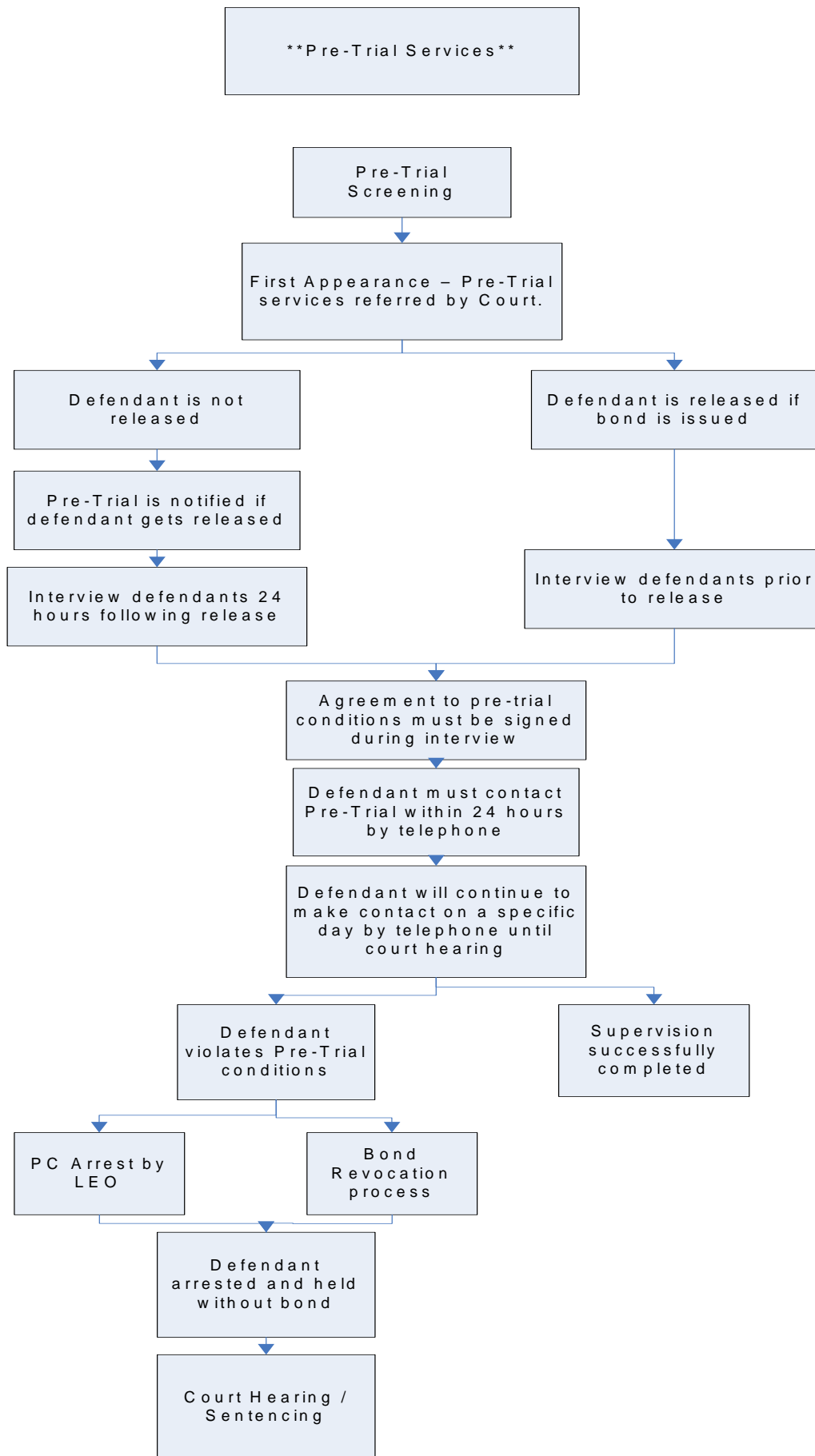


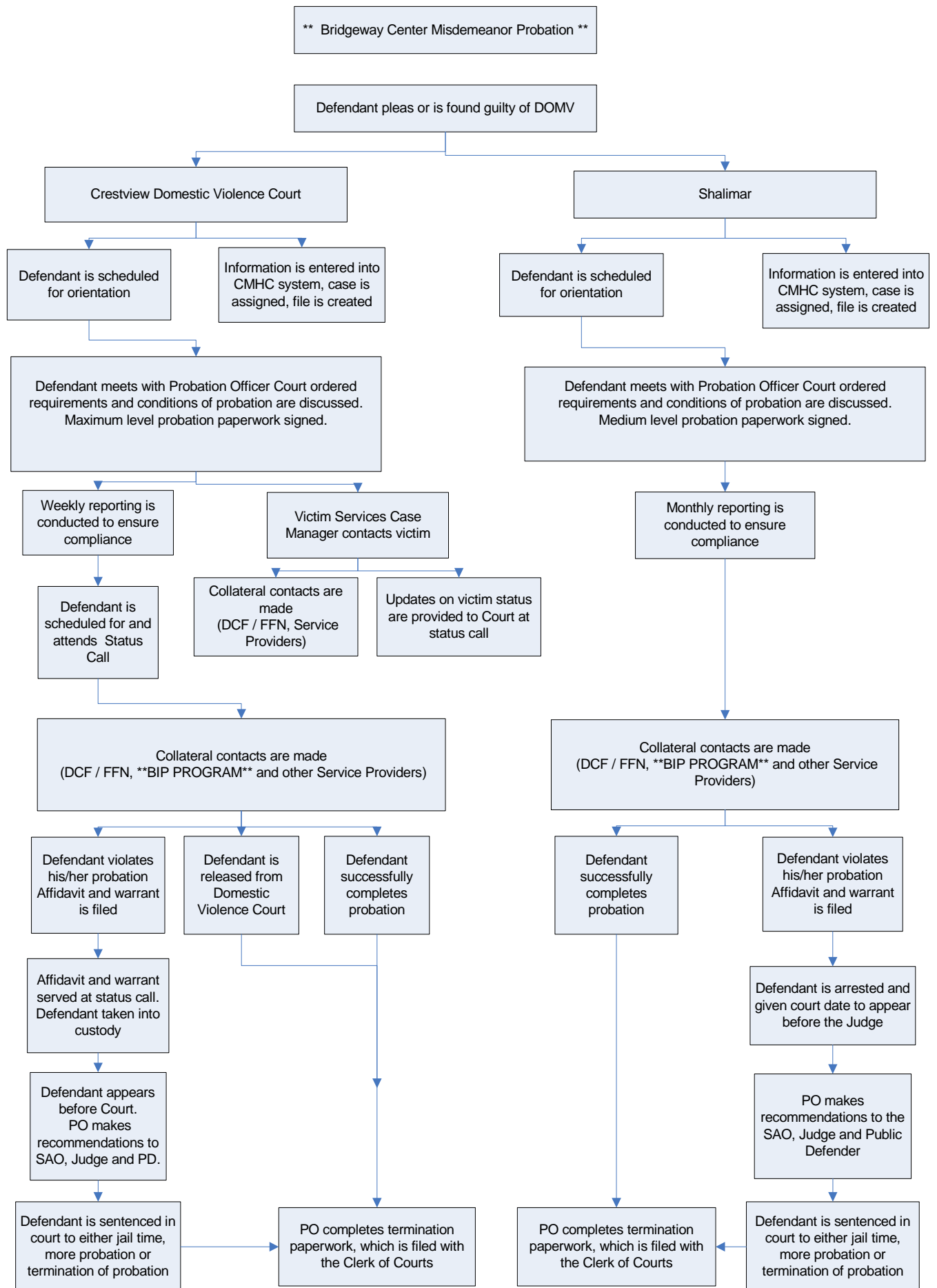












**\*\* SAO Prosecution \*\***

**Criminal Felony Case**  
3<sup>rd</sup> degree – up to 5 years  
2<sup>nd</sup> degree- up to 15 years  
1<sup>st</sup> degree – up to 30 years

**Criminal Misdemeanor Case**  
1 year probation OR  
11 months & 29 days incarceration

Within 40 days of arrest a decision to formally charge has to be made or a defendant can be released.

SAO receives all LEO paperwork

Formal charges filed

Case is reviewed and assigned to a SAO

**Arraignment / Plea Day**  
No pleas are accepted. Case is set for Trial in 90 days and an attorney is appointed.

Case is further assessed to determine evidentiary strength

Discovery Process

If victim attempts to drop charges – then victim attends the VA counseling class

Letters are mailed to the victim by SAO Victim Advocate

**Pretrial Conference**  
Two weeks prior to Trial – occurs in the Judge's Chambers to see what the progress of the case is.

**Plea Day**  
SAO looks at the circumstances of the case and offers sentence- defendant has an opportunity to plea to the charges.

**Docket Day**  
A plea is entered or case goes to Trial.

Guilty or Nolo Contendre

Not Guilty

**\*\*Deferred Prosecution\*\***

**Pre-Trial Conference**  
Turn over all discovery.  
Depositions Taken.

**Trial**

Convicted / PSI Ordered

Case Dismissed

**Sentencing**

**\*\*Jail\*\***

**\*\*Probation\*\***

